



UNIVERSITY OF ALABAMA SYSTEM BOARD OF TRUSTEES

Barbara i Humphrey

James i Wilson i III  
3RD CONGRESSIONAL  
DISTRICT

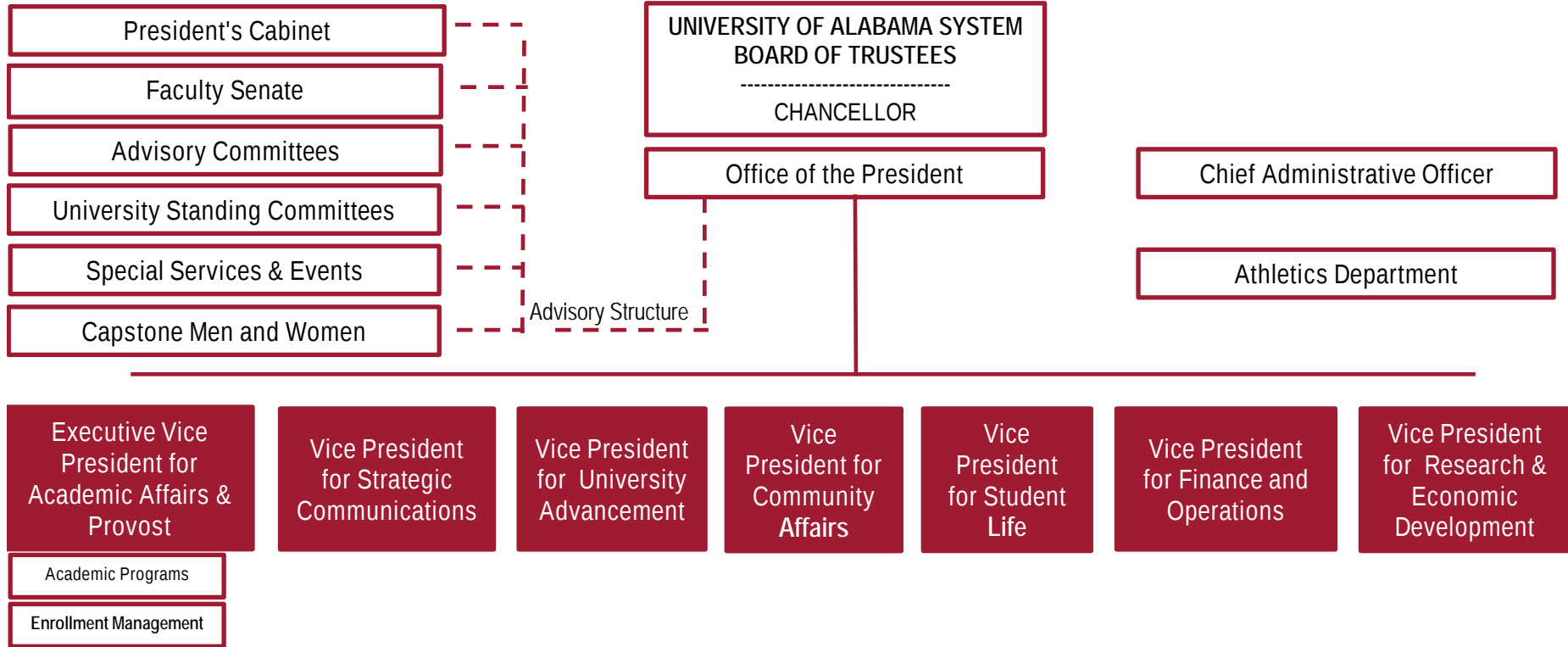
PON\$DD

6TH CONGRESSIONAL  
DISTRICT, PRESIDEN\$ne@

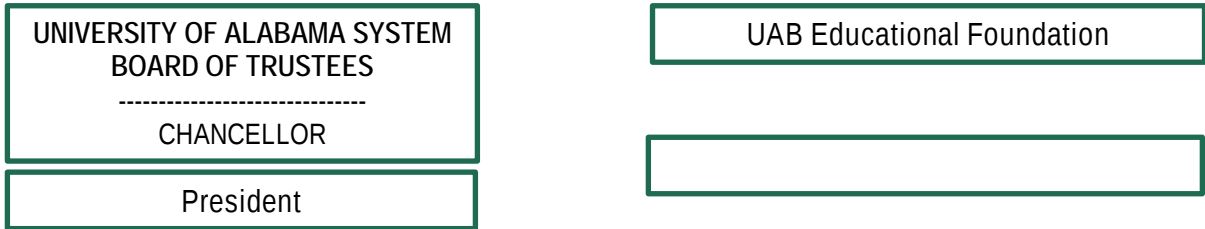
Finis E. St. John IV  
CHANCELLOR

Mark Foley  
SECRETARY OF THE  
BOARD OF TRUSTEES

# The University of Alabama Organizational Chart



# The University of Alabama at Birmingham Organizational Chart



Last updated: September, 2022



2005 2006 2007 2008 2009 2010 2011 2012 2013 2014 2015 2016 2017 2018 2019 2020 2021 2022

UA

ApplicationsUA



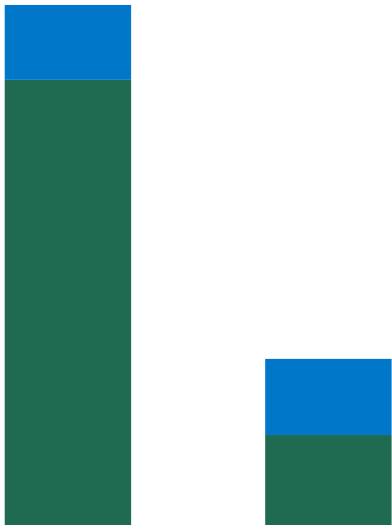
	1986	1996	1998	2000	2002	2004	2005	2006	2008	2010	2012	2013	2014	2016	2018	2019	2020	2021	2022
<b>UA</b>	<b>2,913</b>	<b>2,066</b>	<b>2,616</b>	<b>2,956</b>	<b>2,654</b>	<b>3,367</b>	<b>3,735</b>	<b>4,378</b>	<b>5,116</b>	<b>5,519</b>	<b>6,371</b>	<b>6,454</b>	<b>6,824</b>	<b>7,559</b>	<b>6,663</b>	<b>6,764</b>	<b>6,507</b>	<b>7,593</b>	<b>8,037</b>
In-state	1,864	1,384	1,941	2,214	2,028	2,441	2,592	2,898	3,221	3,121	2,846	2,578	2,462	2,412	2,271	2,533	2,701	2,851	2,799
% In-state	64%	67%	74%	75%	76%	72%	69%	66%	63%	57%	45%	40%	36%	32%	34%	37%	42%	38%	35%
Out-of-state	1,013	645	651	719	602	909	1,137	1,451	1,880	2,339	3,327	3,714	4,269	5,089	4,267	4,150	3,772	4,701	5,190
Foreign countries	36	37	24	23	24	17	6	29	15	59	198	162	93	58	125	81	34	41	368

Fall 2022 Enrollment

69,520

### Enrollment by Level and Status

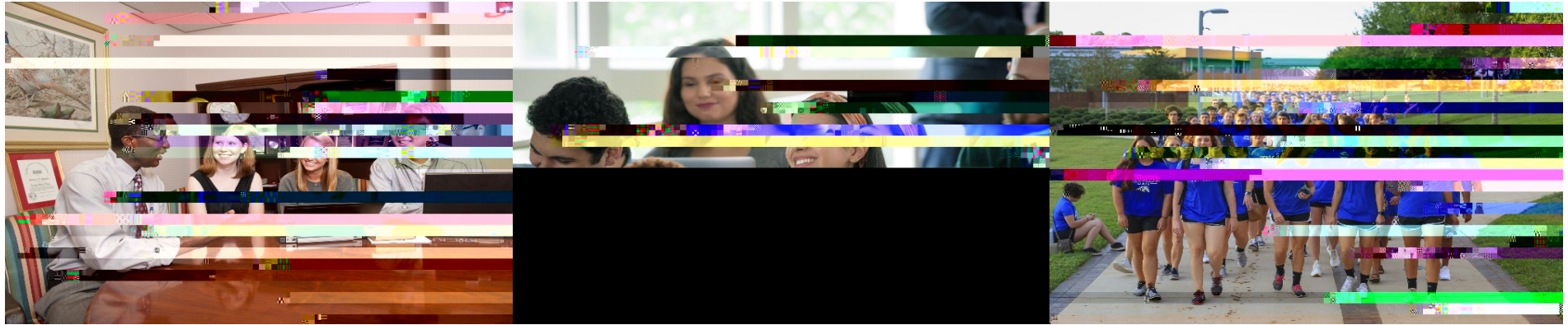
	2013	2014	2015	2016	2017	2018	2019	2020	2021	2022
<b>UA</b>	34,732	36,041	37,098	37,663	38,565	38,390	38,100	37,840	38,316	38,544
<b>Graduate</b>	5,312	5,295	5,140	5,100	5,258	5,362	5,305	6,170	6,631	6,186
Full-time	2,950	3,286	3,321	3,268	3,375	3,452	3,460	3,783	3,771	3,635
Part-time	2,362	2,009	1,819	1,832	1,883	1,910	1,845	2,387	2,860	2,551
<b>Undergraduate</b>	29,440	30,752	31,958	32,563	33,305	33,028	32,795	31,670	31,685	32,458
Full-time	26,548	27,737	28,689	29,220	29,923	29,586	29,135	27,750	28,124	28,958
Part-time	2,892	3,015	3,269	3,343	3,382	3,442	3,660	3,920	3,561	3,500
<b>UAB</b>	18,568	18,698	18,333	19,535	20,902	21,923	22,080	22,563	22,289	21,639
<b>Graduate</b>	7,066	7,019	6,822	7,166	7,768	8,087	8,244	8,685	8,742	8,607
Full-time	3,604	3,862	3,515	3,720	4,057	4,178	4,287	4,478	4,525	4,817
Part-time	3,462	3,157	3,307	3,446	3,711	3,909	3,957	4,207	4,217	3,790
<b>Undergraduate</b>	11,502	11,679	11,511	12,369	13,134	13,836	13,836	13,878	13,547	13,032
Full-time	8,357	8,472	8,297	8,971	9,677	10,042	10,315	10,402	10,401	10,263
Part-time	3,145	3,207	3,214	3,398	3,457	3,794	3,521	3,476	3,146	2,769
<b>UAH</b>	7,376	7,348	7,866	8,468	9,101	9,736	9,988	10,000	9,636	9,237
<b>Graduate</b>	1,680	1,730	1,853	1,961	2,011	2,065	1,999	1,973	2,067	2,068
Full-time	565	631	708	760	742	732	601	615	674	726
Part-time	1,115	1,099	1,145	1,201	1,269	1,333	1,398	1,358	1,393	1,342
<b>Undergraduate</b>	5,696	5,618	6,013	6,507	7,090	7,671	7,989	8,027	7,569	7,169
Full-time	4,237	4,304	4,774	5,257	5,903	6,393	6,749	6,730	6,223	5,850
Part-time	1,459	1,314	1,239	1,250	1,187	1,278	1,240	1,297	1,346	1,319
<b>Total</b>	60,696	62,093	63,297	65,666	68,566	70,049	70,168	70,403	70,241	69,520



Data Source (years prior to 2022): Integrated Postsecondary Education Data System (IPEDS). Data Source (2022): campus preliminary reports.

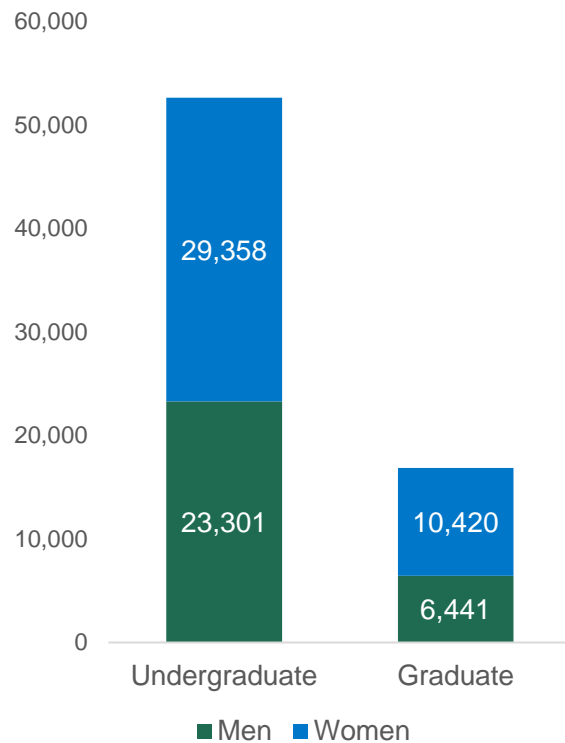


	2013	2014	2015	2016	2017	2018	2019	2020	2021	2022
<b>UA</b>	<b>34,752</b>	<b>36,047</b>	<b>37,098</b>	<b>37,663</b>	<b>38,563</b>	<b>38,390</b>	<b>38,100</b>	<b>37,840</b>	<b>38,316</b>	<b>38,644</b>
American Indian or Alaska Native	152	138	137	146	132	139	147	127	137	134
Asian	406	394	455	481	471	466	494	544	589	608
Black or African American	3,983	4,067	4,123	4,057	4,081	4,038	4,002	4,144	4,277	4,344
Hispanic	1,041	1,214	1,440	1,582	1,736	1,831	1,835	1,870	2,037	2,137
Native Hawaiian or Pacific Islander	37	32	36	37	43	42	43	31	30	41
US Nonresident	1,541	1,687	1,509	1,312	1,171	1,224	1,454	1,176	1,151	1,118
Race/ethnicity unknown	142	144	146	171	209	240	240	247	325	1,355
Two or more races	692	885	943	1,049	1,176	1,242	1,266	1,286	1,277	1,277
White	26,758	27,486	28,309	28,828	29,544	29,168	28,619	28,415	28,493	27,630
<b>UAB</b>	<b>18,568</b>	<b>18,698</b>	<b>18,333</b>	<b>19,535</b>	<b>20,902</b>	<b>21,923</b>	<b>22,080</b>	<b>22,563</b>	<b>22,289</b>	<b>21,639</b>
American Indian or Alaska Native	48	46	48	58	64	59	47	59	52	36
Asian	900	931	1,009	1,094	1,180	1,305	1,380	1,466	4,527	36(A)4.3 (m)-3



Female Students

57%



Enrollment by Level and Gender

	2013	2014	2015	2016	2017	2018	2019	2020	2021	2022
<b>UA</b>	<b>34,752</b>	<b>36,047</b>	<b>37,098</b>	<b>37,663</b>	<b>38,563</b>	<b>38,390</b>	<b>38,100</b>	<b>37,840</b>	<b>38,316</b>	<b>38,644</b>
Undergraduate	29,440	30,752	31,958	32,563	33,305	33,028	32,795	31,670	31,685	32,458
Men	13,556	14,066	14,424	14,451	14,689	14,586	14,518	13,833	13,780	14,152
Women	15,884	16,686	17,534	18,112	18,616	18,442	18,277	17,837	17,905	18,306
Graduate	5,312	5,295	5,140	5,100	5,258	5,362	5,305	6,170	6,631	6,186
Men	2,207	2,165	2,140	2,138	2,181	2,120	2,094	2,308	2,448	2,354
Women	3,105	3,130	3,000	2,962	3,077	3,242	3,211	3,862	4,183	3,832
<b>UAB</b>	<b>18,568</b>	<b>18,698</b>	<b>18,333</b>	<b>19,535</b>	<b>20,902</b>	<b>21,923</b>	<b>22,080</b>	<b>22,563</b>	<b>22,289</b>	<b>21,639</b>
Undergraduate	11,502	11,679	11,511	12,369	13,134	13,836	13,836	13,878	13,547	13,032
Men	4,780	4,877	4,748	5,059	5,325	5,419	5,356	5,314	5,129	4,884
Women	6,722	6,802	6,763	7,310	7,809	8,417	8,480	8,564	8,418	8,148
Graduate	7,066	7,019	6,822	7,166	7,768	8,087	8,244	8,685	8,742	8,607
Men	2,529	2,533	2,437	2,531	2,783	2,944	2,862	2,929	2,982	3,019
Women	4,537	4,486	4,385	4,635	4,985	5,143	5,382	5,756	5,760	5,588
<b>UAH</b>	<b>7,376</b>	<b>7,348</b>	<b>7,866</b>	<b>8,468</b>	<b>9,101</b>	<b>9,736</b>	<b>9,988</b>	<b>10,000</b>	<b>9,636</b>	<b>9,237</b>
Undergraduate	5,696	5,618	6,013	6,507	7,090	7,671	7,989	8,027	7,569	7,169
Men	3,177	3,210	3,449	3,781	4,097	4,421	4,614	4,717	4,475	4,265
Women	2,519	2,408	2,564	2,726	2,993	3,250	3,375	3,310	3,094	2,904
Graduate	1,680	1,730	1,853	1,961	2,011	2,065	1,999	1,973	2,067	2,068
Men	959	967	1,015	1,052	1,023	1,000	959	935	1,010	1,068
Women	721	763	838	909	988	1,065	1,040	1,038	1,057	1,000
<b>Total</b>	<b>60,696</b>	<b>62,093</b>	<b>63,297</b>	<b>65,666</b>	<b>68,566</b>	<b>70,049</b>	<b>70,168</b>	<b>70,403</b>	<b>70,241</b>	<b>69,520</b>

Data Source (years prior to 2022): Integrated Postsecondary Education Data System (IPEDS). Data Source (2022): campus preliminary reports.

	12-13	13-14	14-15	15-16	16-17	17-18	18-19	19-20	20-21	21-22
<b>UA</b>	<b>7,190</b>	<b>7,582</b>	<b>7,905</b>	<b>8,491</b>	<b>8,564</b>	<b>8,881</b>	<b>9,098</b>	<b>9,668</b>	<b>9,612</b>	<b>9,355</b>
Bachelor's	5,000	5,408	5,662	6,354	6,501	6,750	6,912	7,429	7,363	6,740
Master's	1,659	1,645	1,672	1,650	1,578	1,681	1,750	1,831	1,859	2,180
Doctor's - res./sch.	234	211	264	240	245	232	229	193	203	215



	12-13	13-14	14-15	15-16	16-17	17-18	18-19	19-20	20-21	21-22
<b>UA</b>	<b>7,190</b>	<b>7,582</b>	<b>7,905</b>	<b>8,491</b>	<b>8,564</b>	<b>8,881</b>	<b>9,098</b>	<b>9,668</b>	<b>9,612</b>	<b>9,355</b>
American Indian or Alaska Native	31	41	37	30	37	24	34	36	26	29



	12-13	13-14	14-15	15-16	16-17	17-18	18-19	19-20	20-21	21-22
<b>UA</b>	<b>7,190</b>	<b>7,582</b>	<b>7,905</b>	<b>8,491</b>	<b>8,564</b>	<b>8,881</b>	<b>9,098</b>	<b>9,668</b>	<b>9,612</b>	<b>9,355</b>
<b>Bachelor's</b>	<b>5,000</b>	<b>5,408</b>	<b>5,662</b>	<b>6,354</b>	<b>6,501</b>	<b>6,750</b>	<b>6,912</b>	<b>7,429</b>	<b>7,363</b>	<b>6,740</b>
Men	2,213	2,449	2,427	2,777	2,836	2,877	2,917	3,178	3,058	2,850
Women	2,787	2,959	3,235	3,577	3,665	3,873	3,995	4,251	4,305	3,890
<b>Master's</b>	<b>1,659</b>	<b>1,645</b>	<b>1,672</b>	<b>1,650</b>	<b>1,578</b>	<b>1,681</b>	<b>1,750</b>	<b>1,831</b>	<b>1,859</b>	<b>2,180</b>
Men	654	656	630	654	623	688	642	681	694	759
Women	1,005	989	1,042	996	955	993	1,108	1,150	1,165	1,421
<b>Doctor's</b>	<b>493</b>	<b>501</b>	<b>523</b>	<b>449</b>	<b>437</b>	<b>428</b>	<b>416</b>	<b>383</b>	<b>364</b>	<b>396</b>







	American Indian	Asian	African American	Hispanic	Pacific Islander	Nonresident alien	White	Two or more races	Unknown	Total
14 Engineering	6	19	15	22		9	416	8	4	<b>499</b>
52 Business, management, marketing, and related support services	6	14	31	17	1	10	223	10	6	<b>318</b>
51 Health professions and related programs	3	9	30	8			166			



American  
Indian

Asian

African  
American

Hispanic

American  
Indian

Asian

African  
American

Hispanic

Pacific  
Islander

American  
Indian

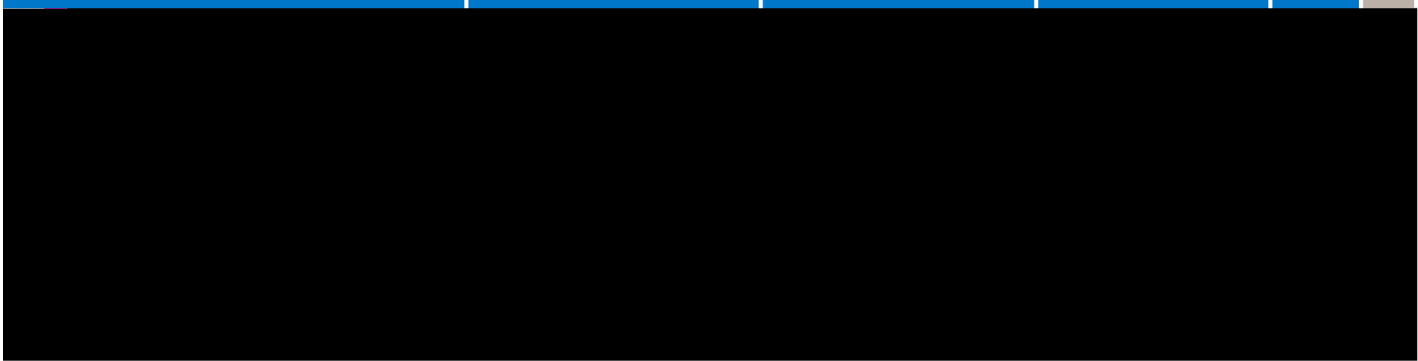
Asian

African  
American

Hispanic

Pacific

2020-21  
 Master's Degrees  
**UAH:**  
**516**  
 Top 10  
 Program Areas



**Master's Degrees by 2-Digit CIP Code by Race: UAH**

	American Indian	Asian	African American	Hispanic	Pacific Islander	Nonresident alien	White	Two or more races	Unknown	Total
51 Health professions and related programs	1	8	11	3			131	2	15	<b>171</b>
52 Business, management, marketing, and related support services	1	3	13	5		6	69	2	8	<b>107</b>
14 Engineering		5	1	1	1	17	71		4	<b>100</b>
11 Computer and information sciences and support services		4	1			15	29			<b>49</b>
40 Physical sciences		1	1			2	15			<b>19</b>
23 English language and literature/letters	1		2				11			<b>14</b>
13 Education			1				9		3	<b>13</b>
26 Biological and biomedical sciences		1	1				6			<b>8</b>
44 Public administration and social service professions			2				6			<b>8</b>
27 Mathematics and statistics			1				6			<b>7</b>
42 Psychology							5		2	<b>7</b>
09 Communication, journalism, and related programs						1	4		1	<b>6</b>
54 History							5			<b>5</b>
30 Multi/interdisciplinary studies							2			<b>2</b>

Source: Integrated Postsecondary Education Data System (IPEDS)



	American Indian	Asian	African American	Hispanic	Pacific Islander	Nonresident alien	White	Two or more races	Unknown	Total
22 Legal professions and studies	1	2	12	6		4	92	1	4	<b>122</b>
13 Education			15	3		4	31	1		<b>54</b>
51 Health professions and related programs			8	3			27	2	2	<b>42</b>
14 Engineering						20	9	1		<b>30</b>
42 Psychology				1		3	16			<b>20</b>

**20 Psychli6 (s)**

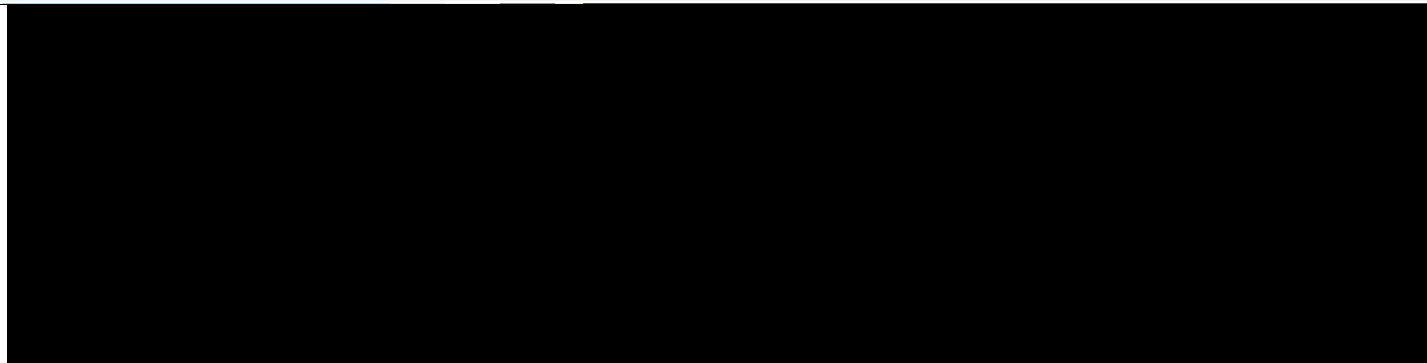
	American Indian	Asian	African American	Hispanic	Pacific Islander	Nonresident alien	White	Two or more races	Unknown	Total
51 Health professions and related programs	1	72	44	16		3	312	20	13	<b>481</b>
26 Biological and biomedical sciences		3	7	4		12	39	2	1	<b>68</b>
14 Engineering			3			4	4	1		<b>12</b>
42 Psychology										

D 171 0.7 (t of)2 3 Td(2612)TjEMgi)-0.7 (c)-2.7 pBDC /

2020-21  
 Doctor's Degrees

**UAH:  
 77**

**Program Areas**



**Doctor's Degrees by 2-Digit CIP Code by Race: UAH**

	American Indian	Asian	African American	Hispanic	Pacific Islander	Nonresident alien	White	Two or more races	Unknown	Total
51 Health professions and related programs		3	8	2			18	1	5	<b>37</b>
14 Engineering	1	1				15	8			<b>25</b>
40 Physical sciences						6	5			<b>11</b>
11 Computer and information sciences and support services		1				1	1			<b>3</b>
26 Biological and biomedical sciences							1			<b>1</b>

Source: Integrated Postsecondary Education Data System (IPEDS)



	American Indian	Asian	African American	Hispanic	Pacific Islander	Nonresident alien	White	Two or more races	Unknown	Total
51 Health professions and related programs	1	75	60	21		3	357	23	20	<b>560</b>
22 Legal professions and studies	1	2	12	6		4	92	1	4	<b>122</b>
26 Biological and biomedical sciences		3	7	4		13	44	2	1	<b>74</b>
14 Engineering	1	1	3			39	21	2		<b>67</b>
13 Education			17	3		6	35	1		<b>62</b>
40 Physical sciences		1		1		13	19			<b>34</b>
42 Psychology				1		3	28			<b>32</b>
45 Social sciences		2	2			4	6	3		<b>17</b>
31 Parks, recreation, leisure, fitness, and kinesiology		1	3				7	2		<b>13</b>
09 Communication, journalism, and related programs						5	6	1		<b>12</b>
30 Multi/interdisciplinary studies		1	5	2			2			<b>10</b>
52 Business, management, marketing, and related support services			1			5	3	1		<b>10</b>
27 Mathematics and statistics						8				<b>8</b>
11 Computer and information sciences and support services		1				4	2			<b>7</b>
50 Visual and performing arts			1			2	4			<b>7</b>
23 English language and literature/letters							4		2	<b>6</b>
44 Public administration and social service professions			1			2	2			<b>5</b>
16 Foreign languages, literatures, and linguistics			1	1						<b>2</b>
54 History							2			<b>2</b>

\_\_\_\_\_

\_\_\_\_\_

\_\_\_\_\_

Reporting Year	2013	2014	2015	2016	2017	2018	2019	2020	2021	2022
Adjusted Cohort	2007	2008	2009	2010	2011	2012	2013	2014	2015	2016
<b>UA</b>	<b>4,438</b>	<b>5,009</b>	<b>5,062</b>	<b>5,443</b>	<b>5,665</b>	<b>6,302</b>	<b>6,385</b>	<b>6,791</b>	<b>7,169</b>	<b>7,532</b>
<b>Men</b>	<b>1,977</b>	<b>2,233</b>	<b>2,316</b>	<b>2,437</b>	<b>2,526</b>	<b>2,783</b>	<b>2,795</b>	<b>2,919</b>	<b>3,000</b>	<b>3,238</b>
% Graduated	63%	62%	63%	64%	65%	69%	68%	70%	70%	70%
<b>Women</b>	<b>2,461</b>	<b>2,776</b>	<b>2,746</b>	<b>3,006</b>	<b>3,139</b>	<b>3,519</b>	<b>3,590</b>	<b>3,872</b>	<b>4,169</b>	<b>4,294</b>
% Graduated	69%	69%	71%	73%	71%	74%	73%			





<b>Reporting Year</b>	<b>2013</b>	<b>2014</b>	<b>2015</b>	<b>2016</b>	<b>2017</b>	<b>2018</b>	<b>2019</b>	<b>2020</b>	<b>2021</b>	<b>2022</b>
<b>Adjusted Cohort</b>	<b>2007</b>	<b>2008</b>	<b>2009</b>	<b>2010</b>	<b>2011</b>	<b>2012</b>	<b>2013</b>	<b>2014</b>	<b>2015</b>	<b>2016</b>
<b># Students in cohort</b>	<b>1,378</b>	<b>1,246</b>	<b>1,494</b>	<b>1,537</b>	<b>1,576</b>	<b>1,652</b>	<b>1,727</b>	<b>1,714</b>	<b>1,590</b>	<b>1,931</b>
American Indian or Alaska Native	3	8	12	3	4	8	3	3	5	11
Asian	75	70	79	107	108	109	142	131	159	152
Black or African American	349	272	358	402	381	373	384	449	354	491
Hispanic	27	28	37	28	36	50	40	42	51	49
Native Hawaiian or Other Pacific Isl.	0	1	1	2	1	1	0	0	0	

**Reporting Year**

**2013**

**2014**

**2015**

**2016**

**2017**

**2018**

**2019**

**2020**

**2021**

**2022**

**Adjusted Cohort**



<b>Reporting Year</b>	<b>2013</b>	<b>2014</b>	<b>2015</b>	<b>2016</b>	<b>2017</b>	<b>2018</b>	<b>2019</b>	<b>2020</b>	<b>2021</b>	<b>2022</b>
<b>Adjusted Cohort</b>	<b>2007</b>	<b>2008</b>	<b>2009</b>	<b>2010</b>	<b>2011</b>	<b>2012</b>	<b>2013</b>	<b>2014</b>	<b>2015</b>	<b>2016</b>
<b># Students in cohort</b>	<b>6,575</b>	<b>7,020</b>	<b>7,330</b>	<b>7,580</b>	<b>7,893</b>	<b>8,569</b>	<b>8,750</b>	<b>9,219</b>	<b>9,785</b>	<b>10,656</b>
American Indian or Alaska Native	38	38	57	33	45	29	42	32	43	47
Asian	146	156	181	201	193	200	240	221	282	290
Black or African American	833	888	1,012	1,139	1,144	1,039	1,055	1,088	1,152	1,173
Hispanic	120	152	197	248	208	317	292	359	450	499
Native Hawaiian or Other Pacific Isl.	0	1	2	10	5	9	6	4	8	8
US Nonresident	66	64	83	84	169	228	204	135	134	130
Race/ethnicity unknown	39	57	49	43	41	38	27	28	47	53
Two or more races	41	18	34	154	199	236	262	349	294	386
White	5,292	5,646	5,715	5,668	5,889	6,473	6,622	7,003	7,375	8,070
<b># Completers</b>	<b>4,066</b>	<b>4,334</b>	<b>4,594</b>	<b>4,848</b>	<b>4,996</b>	<b>5,812</b>	<b>6,003</b>	<b>6,355</b>	<b>6,792</b>	<b>7,468</b>







Red horizontal bar

Dark green horizontal bar

Blue horizontal bar

Light gray horizontal bar

Dark gray horizontal bar







## Full-time Faculty by Gender

	2015	2016	2017	2018	2019	2020	2021	2022
<b>UA</b>	<b>1,328</b>	<b>1,378</b>	<b>1,435</b>	<b>1,484</b>	<b>1,528</b>	<b>1,517</b>	<b>1,557</b>	<b>1,583</b>
Men	749	765	788	813	834	818	835	835
Women	579	613	647	671	694	699	722	748
% Women	44%	44%	45%	45%	45%	46%	46%	47%
<b>UAB</b>	<b>2,268</b>	<b>2,274</b>	<b>2,336</b>	<b>2,444</b>	<b>2,523</b>	<b>2,544</b>	<b>2,603</b>	<b>2,668</b>
Men	1,369	1,360	1,389	1,432	1,441	1,438	1,449	1,444
Women	899	914	947	1,012	1,082	1,106	1,154	1,224
% Women	40%	40%	41%	41%	43%	43%	44%	46%
<b>UAH</b>	<b>321</b>	<b>327</b>	<b>346</b>	<b>347</b>	<b>363</b>	<b>353</b>	<b>351</b>	<b>358</b>
Men	187	187	191	191	196	194	188	194
Women	134	140	155	156	167	159	163	164
% Women	42%	43%	45%	45%	46%	45%	46%	46%
<b>UAS Total</b>	<b>3,917</b>	<b>3,979</b>	<b>4,117</b>	<b>4,275</b>	<b>4,414</b>	<b>4,414</b>	<b>4,511</b>	<b>4,609</b>
Men	2,305	2,312	2,368	2,436	2,471	2,450	2,472	2,473
Women	1,612	1,667	1,749	1,839	1,943	1,964	2,039	2,136
% Women	41%	42%	42%	43%	44%	44%	45%	46%

Data Source (years prior to 2022): Integrated Postsecondary Education Data System (IPEDS). Data Source (2022): campus preliminary reports.

	2015	2016	2017	2018	2019	2020	2021	2022
<b>The University of Alabama</b>	<b>1,328</b>	<b>1,378</b>	<b>1,435</b>	<b>1,484</b>	<b>1,528</b>	<b>1,517</b>	<b>1,557</b>	<b>1,583</b>
American Indian or Alaska Native		1	4	4	4	4	3	2
Asian	88	94	107	118	137	134	146	157
Black or African American	76	80	93	93	94	97	98	92
Hispanic or Latino	35	34	34	37	41	44	45	46
Native Hawaiian or Other Pacific Islander			2	2	3	3	3	4
US Nonresident	53	59	61	65	61	68	77	72
Race/ethnicity unknown	22	63	1	3	6	3	3	10
Two or more races	4	2	2	4	6	8	12	10
White	1,050	1,045	1,131	1,158	1,176	1,156	1,170	1,190
<b>University of Alabama at Birmingham</b>	<b>2,268</b>	<b>2,274</b>	<b>2,336</b>	<b>2,444</b>	<b>2,523</b>	<b>2,544</b>	<b>2,603</b>	<b>2,668</b>
American Indian or Alaska Native	4	4	4	4	4	5	4	8
Asian	334	350	356	372	391	398	410	422
Black or African American	129	131	146	154	155	153	161	171
Hispanic or Latino	70	75	71	75	78	80	83	89
Native Hawaiian or Other Pacific Islander	1		2	1	1	2	3	2
US Nonresident	69	73	91	115	137	152	148	142
Race/ethnicity unknown			1	3	1	2	1	4
Two or more races	12	15	17	17	18	17	21	24
White	1,649	1,626	1,648	1,703	1,738	1,735	1,772	1,806
<b>University of Alabama in Huntsville</b>	<b>321</b>	<b>327</b>	<b>346</b>	<b>347</b>	<b>363</b>	<b>353</b>	<b>351</b>	<b>358</b>
American Indian or Alaska Native					1	2	3	2
Asian	50	54	58	60	62	60	64	70
Black or African American	13	12	16	17	20	18	18	20
Hispanic or Latino	8	8	8	7	8	7	9	9
Native Hawaiian or Other Pacific Islander	1	1	1	1				
US Nonresident	16	11	13	16	18	21	17	13
Two or more races	1	1	1	1	1	1	1	1
White	232	240	249	245	253	244	239	243
<b>UAS Total</b>	<b>3,917</b>	<b>3,979</b>	<b>4,117</b>	<b>4,275</b>	<b>4,414</b>	<b>4,414</b>	<b>4,511</b>	<b>4,609</b>

	2014	2015	2016	2017	2018	2019	2020	2021
<b>UA</b>	<b>\$53,140</b>	<b>\$58,234</b>	<b>\$62,549</b>	<b>\$63,282</b>	<b>\$71,992</b>	<b>\$83,317</b>	<b>\$95,200</b>	<b>\$129,509</b>
Comp. and information sciences	\$11,756	\$14,145	\$13,443	\$12,047	\$11,550	\$12,482	\$12,836	\$12,797
Engineering	\$15,372	\$17,102	\$18,394	\$19,382	\$24,667	\$31,845	\$33,019	\$43,941
Geosc., atmosph., & ocean sc.	\$823	\$903	\$1,597	\$828	\$895	\$1,000	\$3,062	\$4,302
Life sciences	\$4,886	\$5,333	\$5,174	\$5,668	\$7,297	\$8,452	\$8,985	\$14,565
Mathematics and statistics	\$275	\$200	\$127	\$99	\$43	\$179	\$262	\$1,174
Non-S&E	\$5,220	\$6,679	\$9,154	\$11,131	\$12,081	\$15,285	\$22,940	\$29,799
Other sciences	\$31							
Physical sciences	\$6,730	\$6,118	\$6,841	\$6,275	\$7,501	\$5,815	\$6,471	\$7,991
Psychology	\$3,601	\$3,887	\$3,997	\$3,394	\$2,889	\$2,931	\$3,030	\$5,384
Social sciences	\$4,446	\$3,867	\$3,822	\$4,458	\$5,069	\$5,328	\$4,595	\$9,556
<b>UAB</b>	<b>\$428,563</b>	<b>\$516,229</b>	<b>\$537,825</b>	<b>\$561,851</b>	<b>\$588,207</b>	<b>\$607,863</b>	<b>\$618,226</b>	<b>\$644,330</b>
Comp. and information sciences	\$1,010	\$940	\$2,466	\$575	\$919	\$827	\$1,502	\$1,356
Engineering	\$17,847	\$37,222	\$43,359	\$47,730	\$48,102	\$47,555	\$53,030	\$46,844
Geosc., atmosph., & ocean sc.	\$342	\$8,362	\$2,022	\$1,496	\$1,199	\$870	\$701	\$436
Life sciences	\$396,805	\$455,478	\$472,114	\$491,477	\$511,345	\$533,536	\$542,308	\$571,525
Mathematics and statistics	\$264	\$137	\$1,157	\$324	\$320	\$876	\$916	\$383
Non-S&E	\$7,088	\$6,643	\$6,333	\$8,200	\$13,147	\$12,502	\$9,681	\$7,879
Other sciences								\$10
Physical sciences	\$2,819	\$3,003	\$4,898	\$5,667	\$7,211	\$5,961	\$4,678	\$9,885
Psychology	\$2,085	\$4,161	\$5,235	\$5,558	\$5,355	\$4,933	\$5,164	\$5,695







	2017	2018	2019	2020	2021
<b>Current assets</b>	<b>586,593,318</b>	<b>553,887,777</b>	<b>616,255,540</b>	<b>723,434,517</b>	<b>872,046,615</b>
Cash and cash equivalents	58,865,537	75,384,248	110,653,924	160,981,277	90,380,380
Short-term investments	306,944,426	260,676,941	283,159,572	343,068,171	550,519,440
Accounts receivable, net					



2017

2018

2019

2020

2021



	2017	2018	2019	2020	2021
<b>Current assets</b>	<b>120,081,297</b>	<b>120,009,299</b>	<b>115,007,493</b>	<b>114,048,255</b>	<b>132,880,827</b>
Cash and cash equivalents	12,502,465	31,943,600	29,564,137	42,590,181	61,716,183
Short-term investments	65,786,136	39,294,940	23,782,952	11,687,721	5,472,369
Accounts receivable, net	25,651,203	30,403,827	39,971,336	39,384,004	46,040,430
Other current assets	16,141,493	18,366,932	21,689,068	20,386,349	19,651,845
<b>Noncurrent assets</b>	<b>330,954,118</b>	<b>362,832,311</b>	<b>407,035,636</b>	<b>407,055,475</b>	<b>424,807,196</b>
Restricted cash and cash equivalents	637,878	4,127,889	19,153,493	8,593,145	6,200,150
Endowment and life income investments	34,138,879	35,126,425	34,043,115	33,254,580	47,264,155
Investments for capital activities	21,382,000	25,417,000	41,035,400	51,937,678	66,732,908
Capital assets, net	272,008,654	295,483,325	310,234,994	310,845,959	302,315,333
Other noncurrent assets	2,786,707	2,677,672	2,568,634	2,424,113	2,294,650
<b>Deferred outflows of resources</b>	<b>29,180,939</b>	<b>32,894,090</b>	<b>35,809,718</b>	<b>36,476,893</b>	<b>98,710,616</b>
Pension and OPEB obligations	29,180,939	32,894,090	35,809,718	36,476,893	98,710,616
<b>Total assets and deferred outflows</b>	<b>480,216,354</b>	<b>515,735,700</b>	<b>557,852,847</b>	<b>557,580,623</b>	<b>656,398,639</b>
<b>Current liabilities</b>	<b>71,997,883</b>	<b>71,564,101</b>	<b>90,508,497</b>	<b>85,787,067</b>	<b>88,182,330</b>
Accounts payable and accrued liabilities	24,545,606	20,020,633	31,473,006	27,901,849	34,886,943
Current portion of unearned revenue	38,136,944	42,595,428	49,315,513	48,527,840	47,294,620
Deposits	4,219,095	4,225,891	4,411,829	4,098,522	479,767
Current portion of long-term debt	5,096,238	4,722,149	5,308,149	5,258,856	5,521,000
<b>Noncurrent liabilities</b>	<b>255,732,726</b>	<b>324,923,772</b>	<b>355,755,364</b>	<b>332,992,839</b>	<b>396,641,004</b>
Federal advances - loan funds	380,330	505,113	601,011	721,113	791,231
Long-term debt, net	90,220,396	123,145,440	147,773,906	147,637,713	141,912,317
Pension liability	165,132,000	147,428,000	150,951,000	161,346,000	192,513,000
OPEB liability		53,845,219	56,429,447	23,288,013	61,424,456
<b>Total liabilities</b>	<b>327,730,609</b>	<b>396,487,873</b>	<b>446,263,861</b>	<b>418,779,906</b>	<b>484,823,334</b>
<b>Deferred inflows of resources</b>	<b>9,472,000</b>	<b>26,728,420</b>	<b>25,324,831</b>	<b>46,357,210</b>	<b>46,760,728</b>
Pension and OPEB obligations	9,472,000	26,728,420	25,324,831	46,357,210	46,760,728
<b>Net position</b>	<b>143,013,745</b>				

---

---

---

---

---

---

---

---

---

---

---

---

---

---

---

■

■

2017

2018

2019



\_\_\_\_\_

\_\_\_\_\_

\_\_\_\_\_

	2018	2019	2020	2020	2021
<b>Operating revenues</b>	<b>156,278,435</b>	<b>167,435,999</b>	<b>184,515,197</b>	<b>203,201,705</b>	<b>215,826,017</b>
Tuition and fees, net	62,397,294	67,638,989	69,513,946	71,219,313	71,283,876
Federal operating grants and contracts	72,467,222	77,317,933	89,185,692	105,431,257	122,216,296
State operating grants and contracts	4,117,407	3,919,899	3,775,885	4,373,211	4,609,046
Private operating grants and contracts	2,301,327	1,740,491	1,914,579	2,262,876	1,808,959





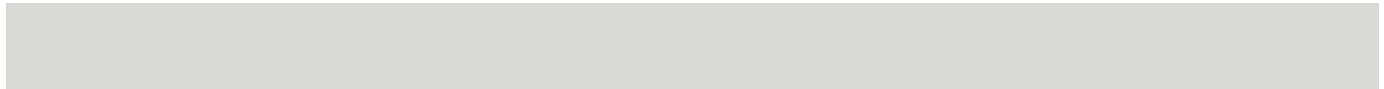
**2017**

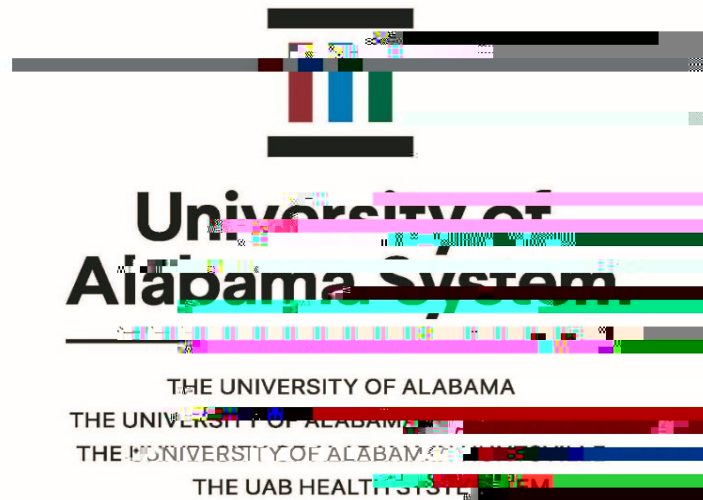
**2018**

**2019**

**2020**

**2021**





**System Analytics and Business Intelligence**  
**Office of Academic and Student Affairs**  
500 University Blvd. E | Tuscaloosa, AL 35401  
(205) 348-8347